

NpsClient

Operation Manual

Rev 1.01

December 20, 2006

1. Table of Contents

1.	Table of Contents.....	2
2.	Change tracking	2
3.	Operating environment.....	2
4.	Installation	2
5.	Operating instructions.....	3
5-1.	Start up and shut down.....	3
5-2.	Start API.....	4
5-3.	Connect the printer.....	4
5-4	Instruct the printer to execute various processing	4
5-5	Instruct the printer to execute printing process.....	5
5-6	Event occurrence and clear.....	5
5-7	Disconnect the printer.....	7
5-8	End API.....	7

2. Change tracking

Date	Description	Revision
Sept. 1, 2006	Document created	1.00
Dec. 20, 2006	“5.2 Start API” and “5.8 End API” were added.	1.01

3. Operating environment

CPU: Pentium 4, 2.0 GHz or more
 Memory: 128 MByte or more
 HDD: 10 M Byte or more
 OS: Windows 2000 Professional SP4
 Windows XP Professional SP2

Communicate with the printer using any port for TCP/IP socket communication. In case security software or firewall is set up, change the settings so that these 3 ports will be available.

4. Installation

Copy the “NpsClient.exe” file to the folder where NpsPrinter.dll is located.

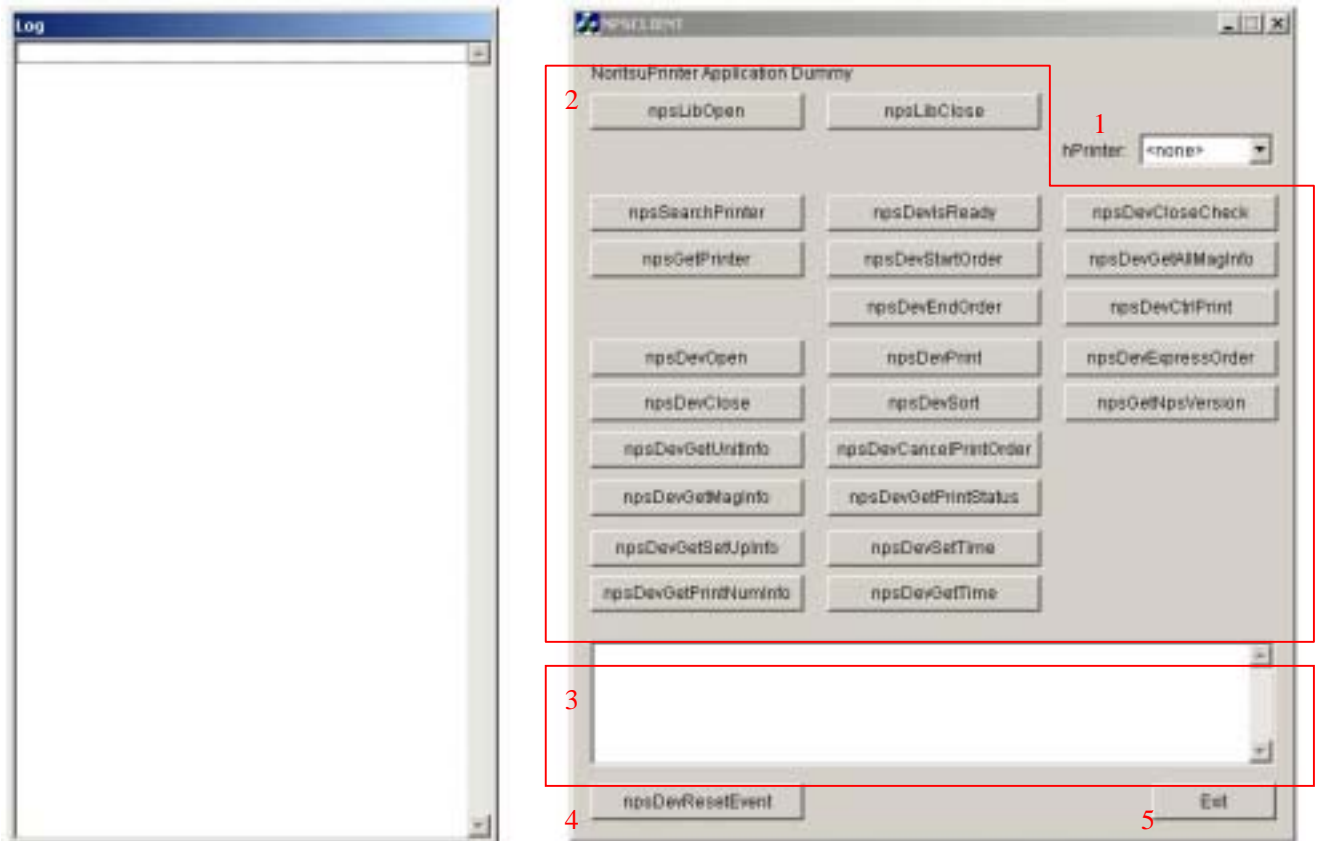
5. Operating instructions

5-1. Start up and shut down

Start Explorer or an equivalent, and click “NpsClient.exe” so that the NpsClient will start.

Once the NpsClient starts, the main screen and the log screen will be brought up.

To shut down the NpsClient, press the “Exit” button in the main screen.



Log screen
Shows API request, response,
and callback notification
information.

Main screen
Calls API, connects with printer, issues
process instruction, issues print instruction,
and disconnects the printer.

Fig. 1. Main and Log screens

1	Printer select combo box	Choose the printer to which instruction will be issued among the printers for which npsDevOpen has been executed.
2	API call button	Button to call NpsAPI.
3	Event notification display list	Display the event notification that needs event clear among all the event notifications.
4	Event notification clear button	Clear the event notification chosen in 3 above.
5	Exit button	Close the application.

5-2. Start API

Press [npsLibOpen] to start Nps API. The npsLibOpen screen will be brought up. Check the Log checkbox and press [OK]. On the log screen check to make sure the response from API is “NPSERR_NORMAL”.

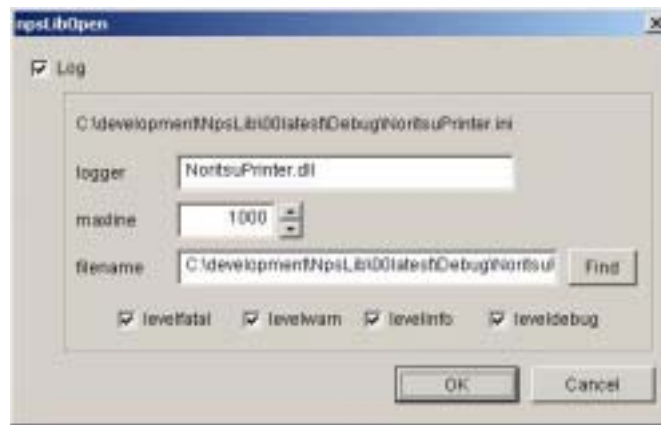


Fig. 2. npsLibOpen screen

5-3. Connect the printer

Start connection with a printer. Press [npsDevOpen] so that the npsDevOpen screen will be brought up.

Type in the IP address of the printer to connect, and press [OK]. Check to confirm on the log screen that the API response shows “NPSERR_NORMAL”.

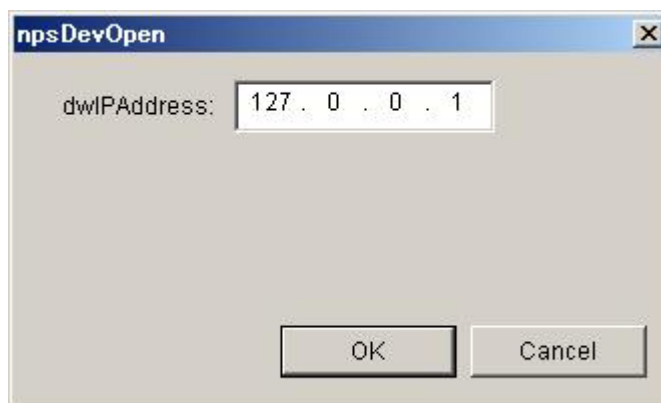


Fig. 3. npsDevOpen screen

5-4 Instruct the printer to execute various processing

In order to instruct the printer to execute an intended processing, ensure that the value in the hPrinter list box on the upper right corner of the main screen is set to the value of the printer ID to which processing will be instructed, and then press the corresponding API button. For example, when hPrinter: 1 and hPrinter: 2 printers are connected, in order

to get the date and time information (npsDevGetTime) from hPrinter: 2:

1. Set the value of the hPrinter list box on the upper right corner of the main screen to “2”.
2. Press [npsDevGetTime].
3. Then if you want to get the paper magazine information (npsDevGetMagInfo) from hPrinter: 1, set the value of the hPrinter list box to “1” and press [npsDevGetMagInfo].

5-5 Instruct the printer to execute printing process

1. Set the value of the hPrinter list box to the hPrinter value of the printer on which printing process will be executed, and press the order start button [npsDevStartOrder]. Check to make sure that the return value is NPSERR_NORMAL. When the return value is NPSERR_REJECT3, it means the printer is receiving an order from another application, in which case, press [npsDevStartOrder] again upon completion of the print request processing of the order.
2. Press the print request button [npsDevPrint]. Then set the print request parameters to the sub dialog provided, and press [OK] on the lower right of the sub dialog. For more information of the parameters, refer to the description of the npsDevPrint API in the “Noritsu Printer Library API specification” document.
3. In order to issue a sort instruction, press [npsDevSort]. In the npsDevSort dialog, specify the Order ID acquired via the npsDevStartOrder API. Then check to make sure that the return value is NPSERR_NORMAL. (Sort instruction is only issued while requesting an order.)
4. Press [npsDevEndOrder]. In the npsDevEndOrder dialog, specify the Order ID acquired via the npsDevStartOrder API. Then check to make sure that the return value is NPSERR_NORMAL so the order will be completed.

5-6 Event occurrence and clear

1. When NpsClient receives an event notification from the printer, the event information will be shown in the event notification list as shown in the figure below. (Only the event notification that requires event clear will be shown.)

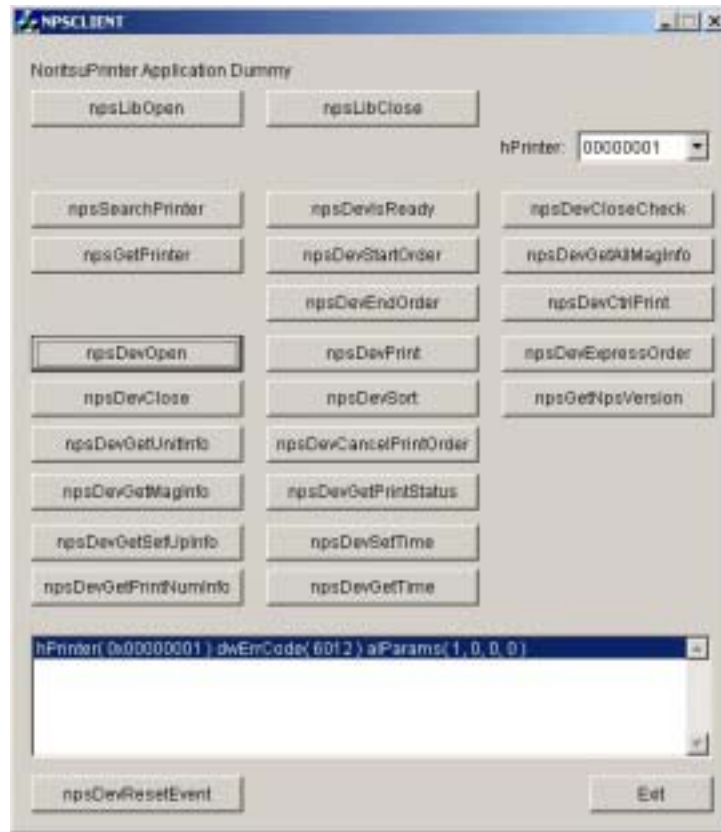


Fig. 4. Event notification status

2. Put the cursor on the event notification message and click so that a dialog to execute npsDevResetEvent will be provided.
3. When [npsDevResetEvent] at the bottom of the dialog is pressed, the npsDevResetEvent dialog will be brought up. Press one of BUTTONS 1-5 so that event will be cleared.



Fig. 5. npsDevResetEvent screen

5-7 Disconnect the printer

Set the value of the hPrinter list box to the printer that you want to disconnect, and press [npsDevClose]. When the NPSERR_NORMAL returns, it means the printer was disconnected successfully. When the printer is running (printing, in the installation mode), then the disconnection will be failed and NPSERR_PRNERR will return. Once the process in progress is completed, press [npsDevClose] again.

5-8 End API

To quit Nps API, press [npsLibClose]. On the log screen, check to make sure that the return value of API is “NPSERR_NORMAL”.